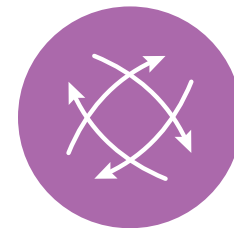


CASE STUDY
VISIT POSTER
#2398

MARS[®] Atlas

GoFast[™] CAR-T

ADVANCED END-TO-END RAPID CAR-T MANUFACTURING IN <72 HOURS



**FAST AND
SCALABLE**



**HIGH
PERFORMANCE**



COST-EFFECTIVE

<72hr CAR-T MANUFACTURE

Closed-fluidic CAR-T manufacturing

Patented GoFast[™] workflow

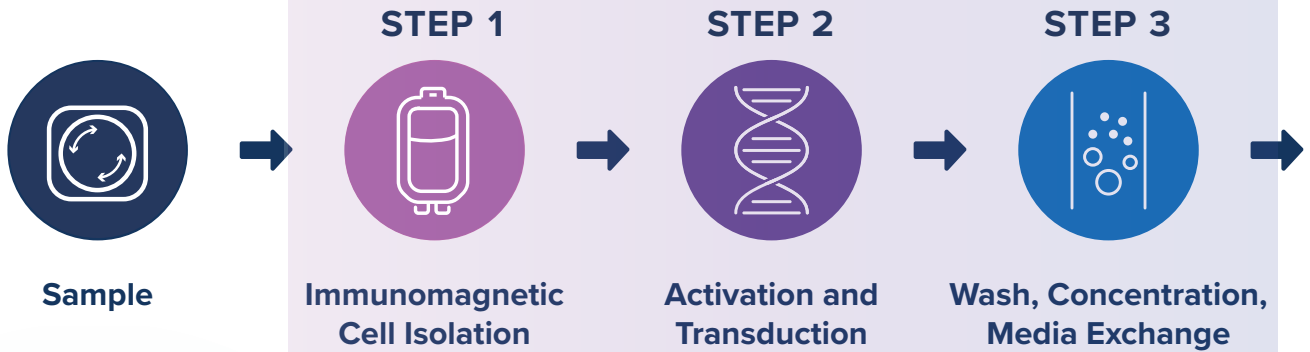
U.S. Patent No. 12,595,460 B2

Let's shape the future of cell therapy
- join us to reduce manufacturing COGS below 10K USD



Let's talk

MARS[®] Atlas - integrated closed, streamlined processing



DESIGNED FOR RAPID CAR-T MANUFACTURING

- <72h CAR-T manufacture
- High purity T cell isolation
- Column-free closed workflow



T cell isolation

High-purity T cell selection

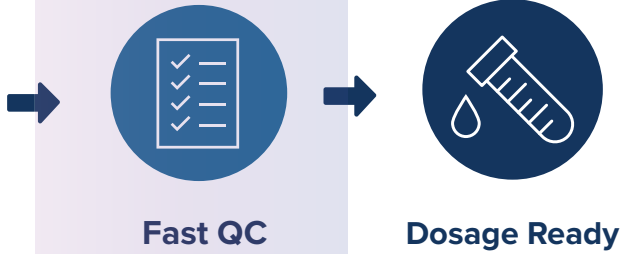
Fresh (Direct From) or Washed Leukopak



Activation + Transduction → CAR-T harvest

Rapid activation and CD19-CAR lentiviral transduction

Hubble® Fast QC



Advanced Reagents Kit

SAME DAY AUTOMATED QC & RELEASE

- Same-day automated QC and release
- Mycoplasma / sterility / VCN
- Fast, reliable, affordable



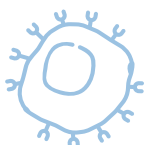
Automated QC



CAR-T Product



Fast release assays for cell products
Mycoplasma, sterility, VCN, genetic integrity, and impurity analysis



CASE STUDY
VISIT POSTER
#1197

Hubble™ Fast QC

Automated QC, Trusted Results, Confident Therapies.



Hubble™

3hr AUTOMATED QC & RELEASE

Fast Release Assays for Cell Products:
Mycoplasma, Sterility, and VCN

SHENTEK™

**SAME DAY AUTOMATED
QC & RELEASE**

Biosafety testing, genetic integrity
testing and impurity analysis

Evaluation Criteria	Standard PCR	Hubble™
Turnaround time	1 day (3 hrs processing time)	~3 hrs
Hands-on time	Moderate	5 min
Operator experience	Significant	Minimal
Use Case	Offline, near-line	Near-line, Ultimately at-line
Cost per Test	Moderate	Optimized / Lower total cost
Operational Risk	Contamination risk	Reduced risk, Closed system

Manufacturing → QC Testing → Release Decision → Patient Dose



Cell Production



Fast, Automated QC
• Mycoplasma
• Sterility
• VCN



Data Review
& Release



Confident
Patient Dose

JOIN THE EARLY ACCESS PROGRAM - VISIT POSTER #1197 & #2398 | BOOTH #932

ISO 13485:2016



Learn more at
appliedcells.com
shentekbio.com



CONTACT US

For research use only. Not for use in therapeutic or diagnostic procedures.

© Copyright 2026. All rights reserved. Applied Cells and MARS® are registered trademarks of Applied Cells, Inc. All other trademarks are the property of their respective owners.

AC_H01-ASGCT